

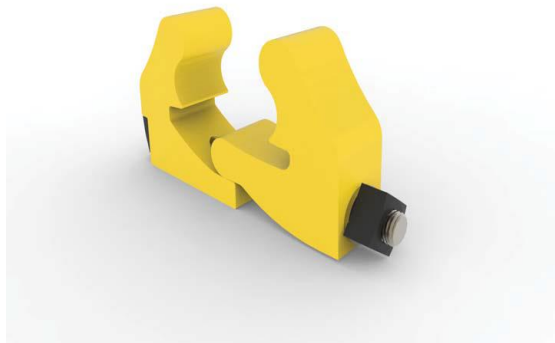
# The Codiun Rail Clamp

---

The New Railway Clamping System

## Description

Conventional Railway Clamping Systems face many challenges which the Codiun Rail Clamp addresses. The clamp design is radically different to the legacy design and guarantees a positive pre-torque angle so that the tighter the bolt is the better the bolt holes are aligned thus eliminating the risk of bent bolts. In tests it has been shown that bolts remain straight even at twice the recommended torque.



To reduce the friction between the clamp and the rail foot the contact points are moved further apart. This reduces the force on the rail and the stress within the edge of the rail foot. The key features of the Codiun clamp are:

- Reduced friction through wider contact points
- Reduced rail stress through wider contact points
- Positive pre-torque angle to eliminate bolt bending

*Codiun Innovation on the Move....*

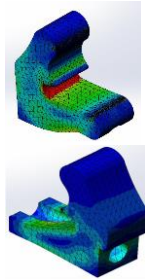
codiun  
rail

Codiun Limited  
Unit 1  
Woodside Road  
South Marston Park  
Swindon  
SN3 4WA  
Phone: 02476 100987  
Email: [sales@codiun.com](mailto:sales@codiun.com)  
Website: [www.codiun.com](http://www.codiun.com)

# Codiun Rail Clamp

## Material Properties

Name:	BS EN 10210-2:5355
Model type:	Linear Elastic Isotropic
Default failure criterion:	Unknown
Yield strength:	355 N/mm <sup>2</sup>
Tensile strength:	410 N/mm <sup>2</sup>
Compressive strength:	410 N/mm <sup>2</sup>
Elastic modulus:	210000 N/mm <sup>2</sup>
Poisson's ratio:	0.3
Mass density:	7800 g/cm <sup>3</sup>
Shear modulus:	78864 N/mm <sup>2</sup>
Thermal expansion coefficient:	1.2e-005 /Kelvin



## Fish Plate Compatibility

Codiun Rail Clamps are used to clamp standard fish plates to rails and a wide variety of rail and fish plate combinations are suitable for fixing by the rail clamp. These include but are not limited to:

Catalogue Number	Description	Supplier Code	Manufacturer
<b>113LB FLAT BOTTOM RAIL</b>			
57/054263	CEN56E1 4 Hole 6mm Gap	MJ1030	LB Foster / Coronet
57/054281	CEN56E1 4 Hole Tight Joint		LB Foster / Coronet
57/054031	CEN56E1 Dimple Maintenance Plate	MJ1032	LB Foster / Coronet
57/054031	113lb Emergency Straight Fishplate		Henry Williams
57/054029	113lb Emergency Joggled Fishplate		Henry Williams
57/054263	BS113A Standard 4 Hole Joint Fishplate		Acieries et Lamnoires de Rives (ALR)
57/054281	BS113A Standard 4 Hole Tight Joint Fishplate		Acieries et Lamnoires de Rives (ALR)
UIC54 Section	56E1 Emergency Straight Fishplate 1200mm Long		Acieries et Lamnoires de Rives (ALR)
<b>UIC60 / CEN60 RAIL</b>			
57/054035	CEN 60E2 4 Hole 6mm Gap	MJ1007	LB Foster / Coronet
57/060539	CEN 60E2 4 Hole Tight Joint	MJ1008	LB Foster / Coronet
57/60101	UIC60 Emergency Joggled Fishplate		Henry Williams
57/054035	CEN60 4 Hole 6mm Gap Fishplate		Acieries et Lamnoires de Rives (ALR)
57/060539	CEN60 4 Hole Tight Joint Fishplate		Acieries et Lamnoires de Rives (ALR)
57/060543	CEN60 6 Hole Tight Joint Fishplate		Acieries et Lamnoires de Rives (ALR)
57/060540	CEN60 New – 113lb New 6 Hole Fishplate		Henry Williams
57/060541	CEN60 New – 113lb 3mm Worn 6 Hole Fishplate		Corus
57/060542	CEN60 New – 113lb 6mm Worn 6 Hole Fishplate		Corus

## Technical Specification

Clamp Thickness	60mm
Shipping Weight	10.4 kg
Shipping Dimensions	312 x 153 x 60mm
Bolt (std)	1" V-Grade Square
Bolt Head (std)	1.5" Square
Bolt (optional)	M27 Grade 10.9
Bolt Head (optional)	32 mm Hexagonal

*Codiun Innovation on the Move....*

Codiun Limited  
Unit 1  
Woodside Road  
South Marston Park  
Swindon  
SN3 4WA  
Phone: 02476 100987  
Email: [sales@codiun.com](mailto:sales@codiun.com)  
Website: [www.codiun.com](http://www.codiun.com)

**codiun**  
**rail**